

BOUFFANT SCRUB HATS



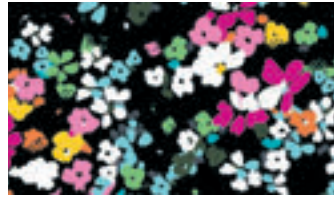
NEW Bouffant Scrub Hat Prints



Cube Appeal (CUAP)
2511C, OS-OS, 100% Cotton

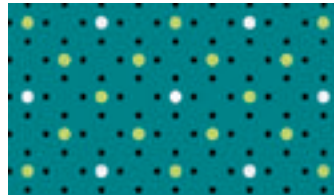


Flying Hearts (FLYH)
2511C, OS-OS, 100% Cotton



Petal Pizzazz (PTPZ)
2511C, OS-OS, 100% Cotton

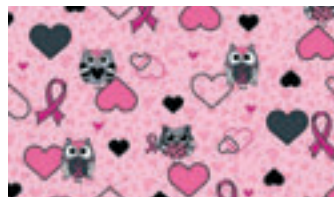
Bouffant Scrub Hat Continuing Prints



Dots For Sure Teal (DFST)
2511C, OS-OS, 100% Cotton



Luck Be A Ladybug (LBLB)
2511C, OS-OS, 100% Cotton



Owl About The Ribbon (OATR)
2511C, OS-OS, 100% Cotton



Sweet Your Heart Out (STYH)
2511C, OS-OS, 100% Cotton

NEW Flower You Doing? (FLDG)

2511C OS-OS
100% Cotton

Contrast Trim: Pewter



SCRUB HATS

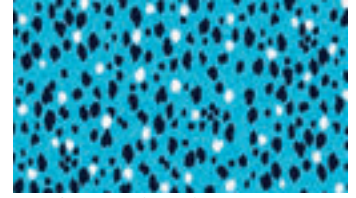
SCRUB HATS



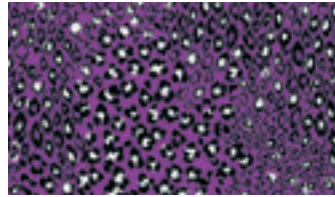
NEW Scrub Hat Prints



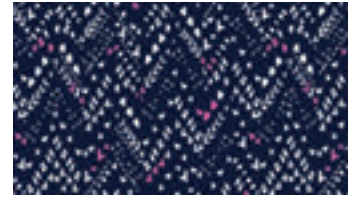
Go Fur It (GOFR)
2505C, OS-OS, 100% Cotton



Purrfect Love (PLVE)
2505C, OS-OS, 100% Cotton

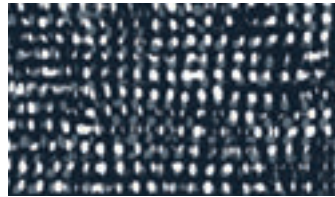


Safari As I Can See (SFAS)
2505C, OS-OS, 100% Cotton

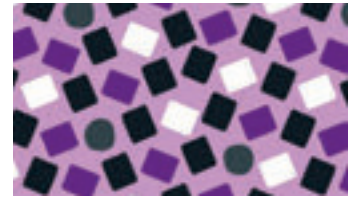


Textured Chevron Pewter (TEPT)
2505C, OS-OS, 100% Cotton

Scrub Hat Continuing Prints



Dots So Simple (DTSS)
2505C, OS-OS, 100% Cotton



Let's Geo! (LEGO)
2505C, OS-OS, 100% Cotton



Snow Leopard (SOLE)
2505V, OS-OS, Brushed 55 Cotton /
45 Poly Poplin

NEW You Dotta Know (YDKW)

2505C OS-OS
100% Cotton

Contrast Trim: Pewter

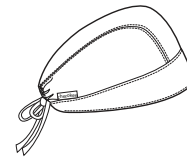


SOLIDS SCRUB HAT

2506

OS-OS
65 Poly / 35 Cotton Poplin w/
Soil Release

This adjustable tie-back scrub hat features a terry cloth sweatband and contoured seaming with back elastic for a better fit.



Available in these Fashion colors:

